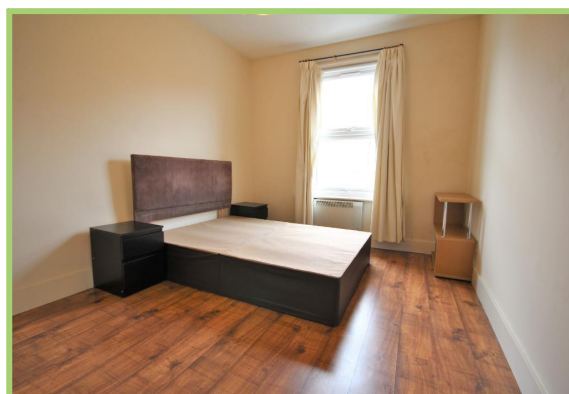


**Seven Sisters Road, Finsbury Park  
 1 Bedroom Flat**

**Price: £350 pw**



- ✓ Seven Sisters Road, Finsbury Park, N4
- ✓ Fitted Kitchen
- ✓ Private Roof Terrace

- ✓ Modern One Bedroom Flat
- ✓ Wood Floors
- ✓ Transport Links

## Seven Sisters Road, Finsbury Park

Bryan Estates are delighted to present to you this spacious one bedroom flat on Seven Sisters road, Finsbury Park, N4.

Benefiting from a large living space, separate fitted kitchen, beautiful bathroom and newly refurbished throughout.

Also boasts a large private roof terrace.

Located seconds from Finsbury Parks Transport links, Finsbury Park itself, local shops, bars and restaurants. Camden Town, Crouch End and Highbury Islington a short bus ride away this really is not to be missed call now 0207 998 4788.



Particulars are thought to be materially correct though their accuracy is not guaranteed and they do not form part of any contract. Services, fittings and equipment referred to within the sales particulars have not been tested and no warranties can be given and prospective buyers must make their own enquiries regarding such matters.

Measurements are approximate and are for a guide only (room measurements are taken and to be to the nearest 3"), we would therefore advise prospective purchasers to check any measurements that are of particular importance to them. Some statements are inevitably 'subjective' and are therefore the view of the author at the time the information was prepared. If any items are important to you, please check with the office first, especially if you are travelling some distance to view.

## Energy Performance Rating

## Energy Efficiency Rating

Score	Energy rating	Current	Potential
92+	A		
81-91	B		
69-80	C		69   C
55-68	D	60   D	
39-54	E		
21-38	F		
1-20	G		