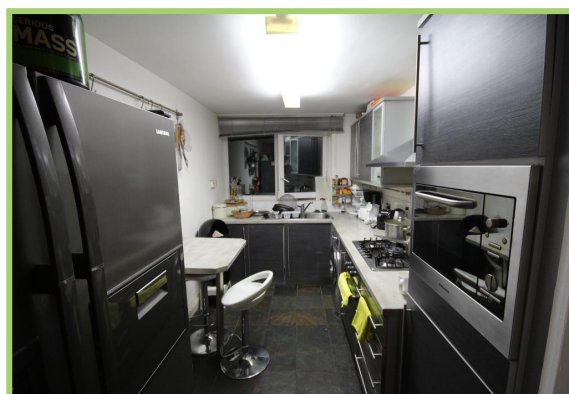
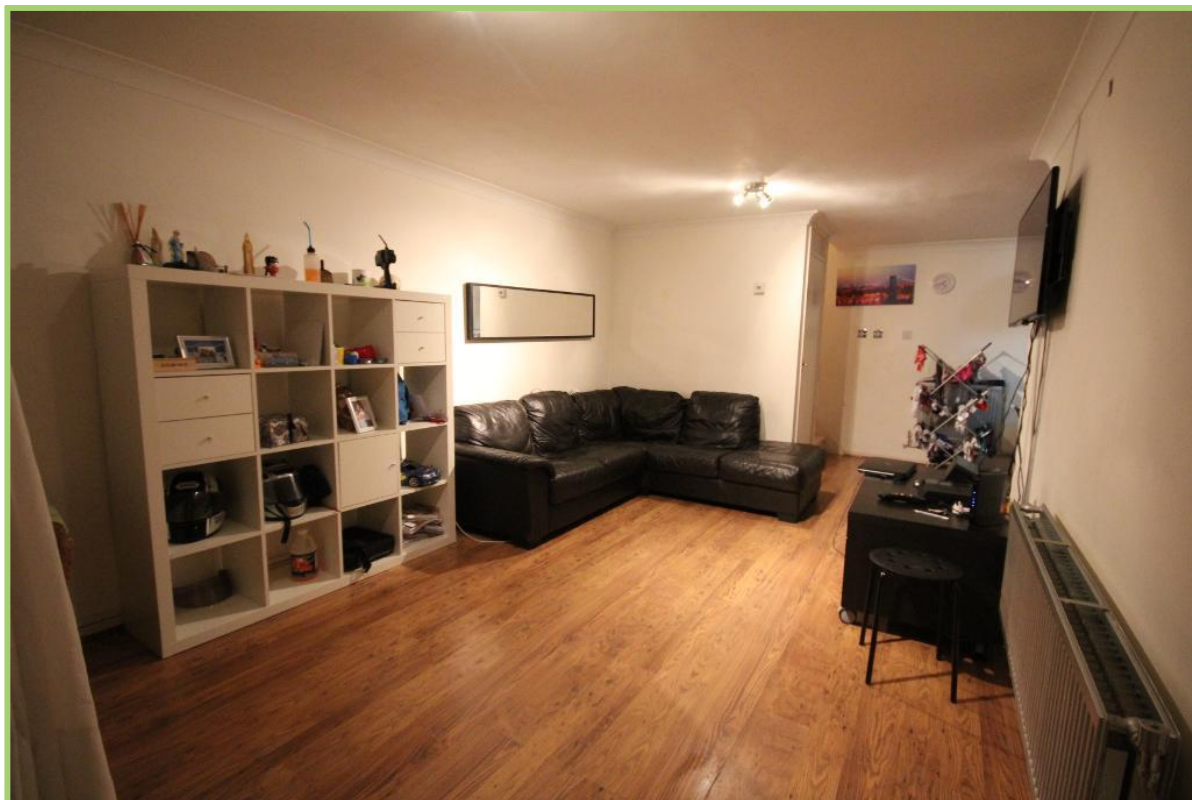


**Heddingham Close, Islington
 2 Bedroom Flat**

Price: £450 pw



- ✓ Tenant Fees Apply
- ✓ Private Garden
- ✓ Split Level
- ✓ Fantastic Amenities

- ✓ Modern
- ✓ Double Glazed
- ✓ Transport Links
- ✓ Residential Parking Available

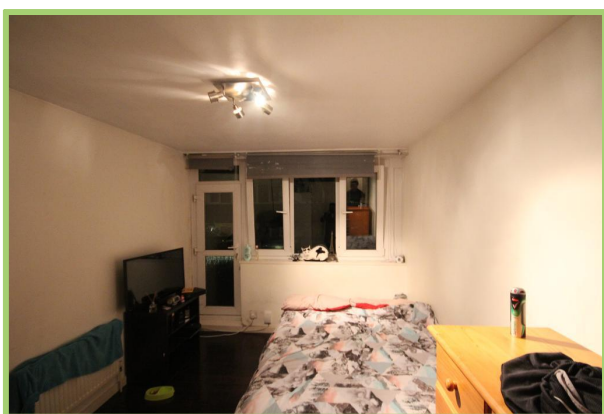
Heddingham Close, Islington

Bryan Estates are pleased to present this spacious split level Two bedroom property located on Heddingham Close, N1.

This large maisonette offers a fantastic lounge, separate fitted kitchen including a breakfast bar, two large double bedrooms, modern bathroom and dining area. Double glazed throughout, modern features and great out door space.

Located within a ten minute walk of Angel Upper Street, as well as Highbury & Islington.

Please call 0207 998 4788.



Particulars are thought to be materially correct though their accuracy is not guaranteed and they do not form part of any contract. Services, fittings and equipment referred to within the sales particulars have not been tested and no warranties can be given and prospective buyers must make their own enquiries regarding such matters.

Measurements are approximate and are for a guide only (room measurements are taken and to be to the nearest 3"), we would therefore advise prospective purchasers to check any measurements that are of particular importance to them. Some statements are inevitably 'subjective' and are therefore the view of the author at the time the information was prepared. If any items are important to you, please check with the office first, especially if you are travelling some distance to view.