

**Blake House, Shakesphere walk,
 London
 1 Bedroom Flat**

**Price: Offers in Excess of
 £320,000**



- ✓ Ground Floor Apartment
- ✓ Double Bedroom
- ✓ Tiled Bathroom With Shower
- ✓ Lots Of Storage Throughout

- ✓ Large Private Garden
- ✓ Spacious Reception Room
- ✓ Good Sized Kitchen
- ✓ Chain Free

Blake House, Shakesphere walk, London

Excellent one bedroom ground floor garden apartment, set within this low-rise well maintained local authority development, located in close proximity to Church Street and Stoke Newington High Street.

The property comprises a decent size living room with sliding doors leading on to a massive private garden, spacious separate Kitchen, double bedroom and excellent storage.

Shakespeare Walk is well located and in an excellent location close to Stoke Newington Road in one direction and the vibrant Stoke Newington Church Street in the other. Clissold Park is also within walking distance. There are excellent transport links including numerous local bus routes into the City and West End, Rectory Road Station into Liverpool Street and Dalston Kingsland Station.

Available Chain Free.

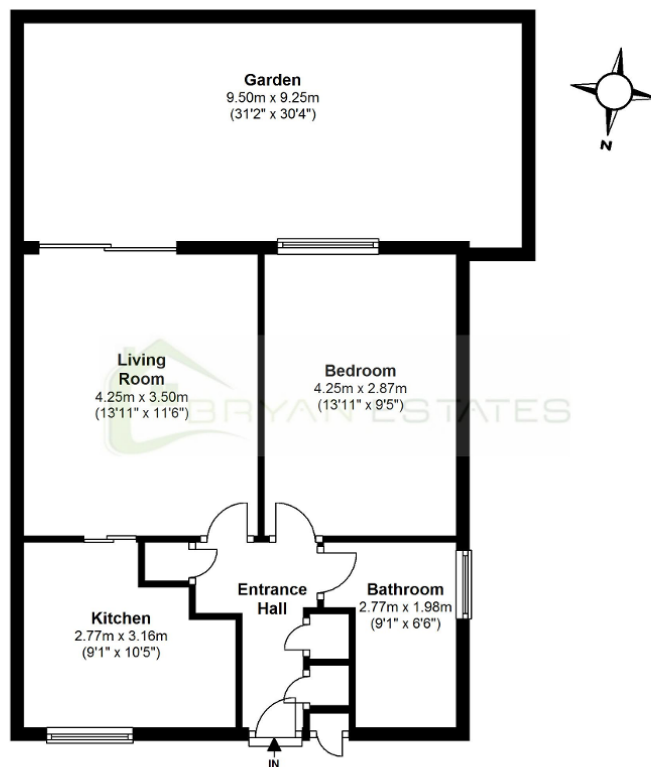


Particulars are thought to be materially correct though their accuracy is not guaranteed and they do not form part of any contract. Services, fittings and equipment referred to within the sales particulars have not been tested and no warranties can be given and prospective buyers must make their own enquiries regarding such matters.

Measurements are approximate and are for a guide only (room measurements are taken and to be to the nearest 3"), we would therefore advise prospective purchasers to check any measurements that are of particular importance to them. Some statements are inevitably 'subjective' and are therefore the view of the author at the time the information was prepared. If any items are important to you, please check with the office first, especially if you are travelling some distance to view.

Ground Floor

Approx. 45.7 sq. metres (492.4 sq. feet)



Total area: approx. 45.7 sq. metres (492.4 sq. feet)

Whilst every effort has been made to ensure the accuracy of the floor plan contained here, measurements of doors, windows, rooms and any other item are approximate and no responsibility is taken for any error, omission or mis-statement. This Plan is for illustrative purposes only and should be used as such by any prospective purchaser.
 Plan produced using PlanUp.

Energy Performance Rating

