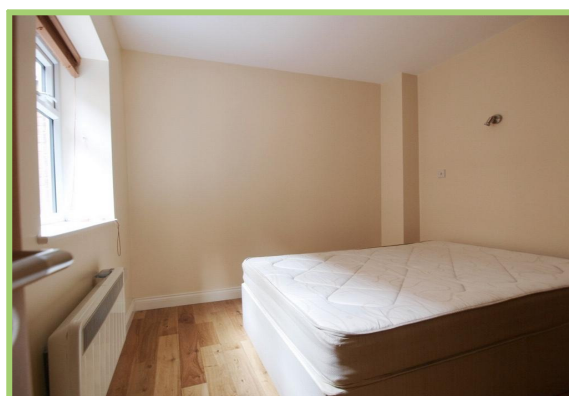


**Hermitage Road, Manor House
1 Bedroom Flat**

Price: £290 pw



- ✓ One Bedroom Flat
- ✓ Brand New Refurbishment
- ✓ Residential Parking Available

- ✓ Victorian Conversion
- ✓ Minutes From Manor House Tube
- ✓ Private Garden

Hermitage Road, Manor House

Bryan Estates are pleased to welcome this fantastic newly built One bedroom garden flat located on Hermitage Road, Manor House, N4.

Boasting a new modern finish throughout, offering an open plan reception with a built in integrated kitchen, tiled bathroom and a double bedroom with built in wardrobe space.

Manor House station is seconds away as well as Finsbury Park. Great amenities can be found dotted through Green Lanes, transport is fantastic and a short walk also.

Call now to arrange a viewing.



Particulars are thought to be materially correct though their accuracy is not guaranteed and they do not form part of any contract. Services, fittings and equipment referred to within the sales particulars have not been tested and no warranties can be given and prospective buyers must make their own enquiries regarding such matters.

Measurements are approximate and are for a guide only (room measurements are taken and to be to the nearest 3"), we would therefore advise prospective purchasers to check any measurements that are of particular importance to them. Some statements are inevitably 'subjective' and are therefore the view of the author at the time the information was prepared. If any items are important to you, please check with the office first, especially if you are travelling some distance to view.