

**Rectory Road, Stoke Newington
 1 Bedroom Flat**

Price: £300 pw



- ✓ Tenant Admin Fee Applies
- ✓ Lower Ground Floor
- ✓ Minutes From Dalston Overground
- ✓ Available now!

- ✓ New Development
- ✓ Private Garden
- ✓ Residential Parking Available
- ✓ Part Furnished

Rectory Road, Stoke Newington

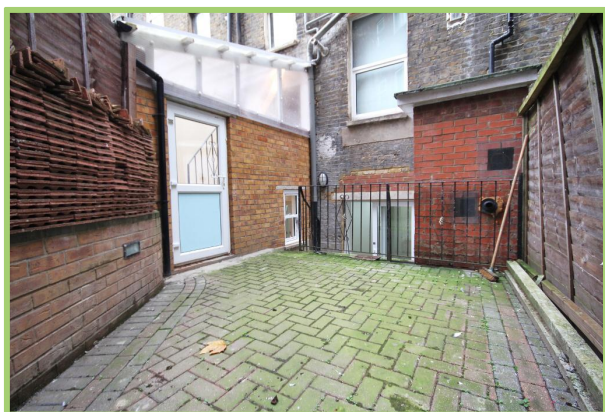
Bryan Estates are pleased to present this Gorgeous newly finished apartment located on Rectory Road, N16.

Finished to an impeccable standard, this gorgeous home offers a modern kitchen which is open plan with reception area, this leads through to an additional area which currently houses a dining table and the property is completed by a spacious bedroom area. Brand new bathroom also present.

The flat also boasts a private concrete garden area.

Kingsland Road is a short walk away, as well as Amhurst Road. Transport links are plenty, with Dalston Kingsland and Rectory Road stations both boasting direct trains into the city.

Please call 0207 998 4788.



Particulars are thought to be materially correct though their accuracy is not guaranteed and they do not form part of any contract. Services, fittings and equipment referred to within the sales particulars have not been tested and no warranties can be given and prospective buyers must make their own enquiries regarding such matters.

Measurements are approximate and are for a guide only (room measurements are taken and to be to the nearest 3"), we would therefore advise prospective purchasers to check any measurements that are of particular importance to them. Some statements are inevitably 'subjective' and are therefore the view of the author at the time the information was prepared. If any items are important to you, please check with the office first, especially if you are travelling some distance to view.