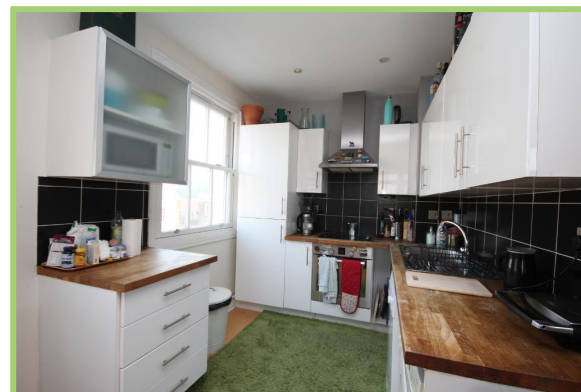


**Newstead House, Liverpool Road, Angel
2 Bedroom Flat**

Price: £460 pw



- ✓ Liverpool Road, Angel, N1
- ✓ Double Glazing
- ✓ Transport Links
- ✓ Furnished

- ✓ Prime Location
- ✓ Open Plan Kitchen
- ✓ Great Surrounding Amenities
- ✓ Communal Garden

Newstead House, Liverpool Road, Angel

Bryan Estates are glad to offer this fantastically located two bedroom flat on Liverpool Road, Islington N1.

Situated minutes from Angel tube station, this location is perfect for anyone city professionals looking for great transport links. Surrounded by great amenities including the N1 Centre, supermarkets and restaurants.

The flat is the penthouse of a desirable Victorian conversion offering two double bedrooms which are carpeted, a spacious modern bathroom which is fully tiled and fitted with a bath/shower combi and boasts an enormous open plan kitchen lounge which overlooks Angel and is fitted with necessary appliances.

Please call 0207 998 4788 to book your viewing.



Particulars are thought to be materially correct though their accuracy is not guaranteed and they do not form part of any contract. Services, fittings and equipment referred to within the sales particulars have not been tested and no warranties can be given and prospective buyers must make their own enquiries regarding such matters.

Measurements are approximate and are for a guide only (room measurements are taken and to be to the nearest 3"), we would therefore advise prospective purchasers to check any measurements that are of particular importance to them. Some statements are inevitably 'subjective' and are therefore the view of the author at the time the information was prepared. If any items are important to you, please check with the office first, especially if you are travelling some distance to view.

Energy Performance Rating

