

Burder Road, Dalston Junction
2 Bedroom Flat

Price: £435,000



- ✓ Two Double Bedrooms
- ✓ 2 x Private Decked Terraces
- ✓ Minutes to Dalston Junction Station
- ✓ 725 Sq Ft

- ✓ Open Plan Kitchen/Reception
- ✓ Modern New Build
- ✓ Chain Free
- ✓ Virtual Tour Available

Burder Road, Dalston Junction

A stunning two bedroom lower ground floor modern apartment located minutes to Dalston Junction station.

Situated on Burder Road, N1, in a modern mews development this property comprises of an open plan kitchen/reception room with integrated appliances including dishwasher and washing machine, two double bedrooms, modern bathroom and two separate private patio's to the front and rear of the property.

Finished to a modern standard throughout with solid wood floors, white washed walls, mood lighting.

A fantastic property available chain free.

Video Tour Available.

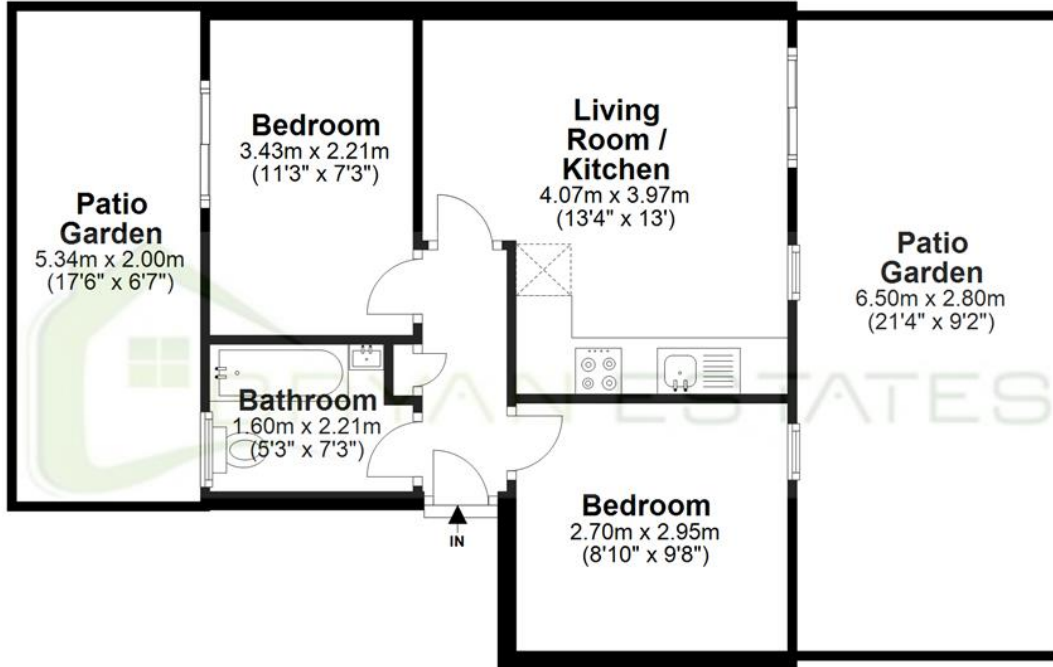


Particulars are thought to be materially correct though their accuracy is not guaranteed and they do not form part of any contract. Services, fittings and equipment referred to within the sales particulars have not been tested and no warranties can be given and prospective buyers must make their own enquiries regarding such matters.

Measurements are approximate and are for a guide only (room measurements are taken and to be to the nearest 3"), we would therefore advise prospective purchasers to check any measurements that are of particular importance to them. Some statements are inevitably 'subjective' and are therefore the view of the author at the time the information was prepared. If any items are important to you, please check with the office first, especially if you are travelling some distance to view.

Basement

Approx. 67.4 sq. metres (725.4 sq. feet)



Total area: approx. 67.4 sq. metres (725.4 sq. feet)

Whilst every effort has been made to ensure the accuracy of the floor plan contained here, measurements of doors, windows, rooms and any other item are approximate and no responsibility is taken for any error, omission or mis-statement. This Plan is for illustrative purposes only and should be used as such by any prospective purchaser.

Plan produced using PlanUp.

Energy Performance Rating

