

**Parsifal Road, West Hampstead  
 Studio**

**Price: £335 pw**



- ✓ Newly Refurbished
- ✓ Communal Gardens
- ✓ Wood Floors Throughout
- ✓ Includes Heating, Electricity & Water

- ✓ Modern Studio Apartment
- ✓ Raised Ground
- ✓ Victorian Conversion
- ✓ Moments From West Hampstead High Street

## Parsifal Road, West Hampstead

Bryan Estates are pleased to offer this newly refurbished spacious studio apartment to rent set in this attractive Victorian house in West Hampstead. The property comprises wood floors throughout, high ceilings, fully fitted kitchen and fully tiled bathroom/WC. The property also boasts access to a large communal garden.

Heating, Electricity & Water rates are included within the rent.

Located in one of West Hampstead's finest roads, Parsifal Road connects Finchley Road and Fortune Green Road and is ideally located to take advantage of the excellent range of local facilities. 02 Shopping Centre is just minutes away and is a comfortable walk to Finchley Road Underground, which connect commuters with the City and Central London (Jubilee and Metropolitan Lines) while the London Overground station of Finchley Road & Frognal is located even closer.

**Bedroom**



**Bathroom**

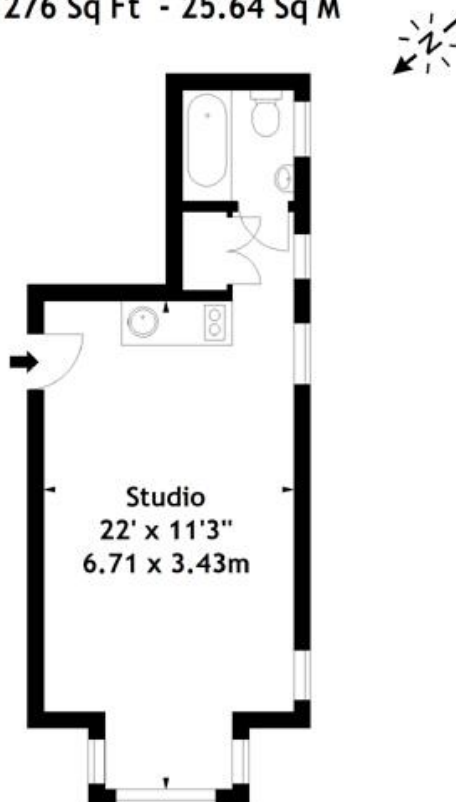


**Communal Garden**



Particulars are thought to be materially correct though their accuracy is not guaranteed and they do not form part of any contract. Services, fittings and equipment referred to within the sales particulars have not been tested and no warranties can be given and prospective buyers must make their own enquiries regarding such matters. Measurements are approximate and are for a guide only (room measurements are taken and to be to the nearest 3"), we would therefore advise prospective purchasers to check any measurements that are of particular importance to them. Some statements are inevitably 'subjective' and are therefore the view of the author at the time the information was prepared. If any items are important to you, please check with the office first, especially if you are travelling some distance to view.

**Parsifal Road, NW6**  
**Approx. Gross Internal Area**  
**276 Sq Ft - 25.64 Sq M**



**Ground Floor**

Measured in accordance with RICS guidelines. Every attempt is made to ensure accuracy, however all measurements are approximate. This floor plan is for illustrative purposes only and is not to scale.  
 © Datagraphy Ltd 2015  
 Photographs \* Floorplans \* Virtual Tours  
 Tel: 0845 643 4401 [www.datagraphy.com](http://www.datagraphy.com)

## Energy Performance Rating

## Energy Efficiency Rating

Score	Energy rating	Current	Potential
92+	A		
81-91	B		
69-80	C		72   C
55-68	D	60   D	
39-54	E		
21-38	F		
1-20	G		