

**Nisbet House, Homerton High Street, Homerton
 1 Bedroom Flat**

Price: £369 pw



- ✓ Ground Floor Flat
- ✓ Separate Living Room
- ✓ Lots of Storage Space

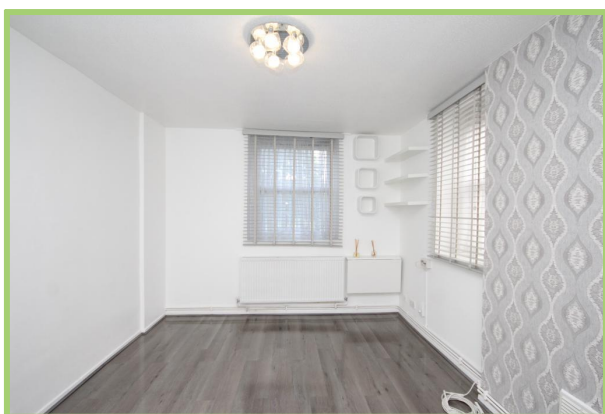
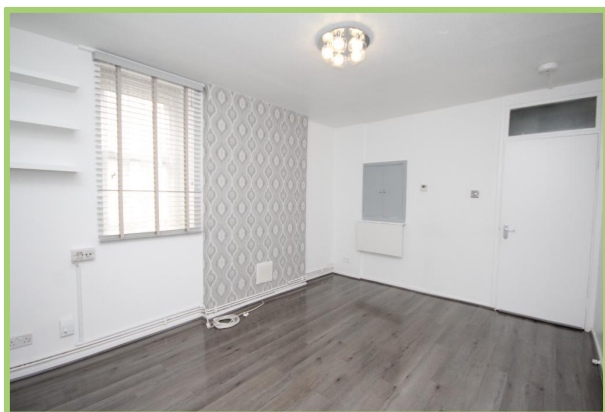
- ✓ One Bedroom Flat
- ✓ Modern Fitted Kitchen
- ✓ Video Tour Available

Nisbet House, Homerton High Street, Homerton

Bryan Estates are pleased to offer this modern ground floor flat of this well cared for ex-local authority block.

This spacious and beautifully presented apartment boasts a wealth of natural light and stunning dark grey wood floors, the accommodation comprises of a large reception room, double bedroom with built-in wardrobes, modern fitted kitchen a tiled bathroom.

Moments from the ever-changing, vibrant Chatsworth Road and transport links including Homerton Overground Station offering swift City and West End access. Council Tax Band B.



Particulars are thought to be materially correct though their accuracy is not guaranteed and they do not form part of any contract. Services, fittings and equipment referred to within the sales particulars have not been tested and no warranties can be given and prospective buyers must make their own enquiries regarding such matters.

Measurements are approximate and are for a guide only (room measurements are taken and to be to the nearest 3"), we would therefore advise prospective purchasers to check any measurements that are of particular importance to them. Some statements are inevitably 'subjective' and are therefore the view of the author at the time the information was prepared. If any items are important to you, please check with the office first, especially if you are travelling some distance to view.

Energy Performance Rating

Energy Efficiency Rating

Score	Energy rating	Current	Potential
92+	A		
81-91	B		
69-80	C		76 C
55-68	D	66 D	
39-54	E		
21-38	F		
1-20	G		